

RETAIL ANCHORED BY



**FOR LEASE
IN LAKE OSWEGO**



LOCATION 17799 Lower Boones Ferry Rd,
Lake Oswego, Oregon

AVAILABLE SPACE 4,084 SF

ASKING RATE Call for details

TRAFFIC COUNT Lower Boones Ferry Rd – 22,073 ADT (14)

DEMOGRAPHICS

	1 Mile	3 Mile	5 Mile
Est. Population	8,445	84,707	202,326
Population Forecast 2020	8,883	88,941	212,852
Average HH Income	\$84,163	\$90,434	\$95,733
Employees	12,157	70,787	109,924

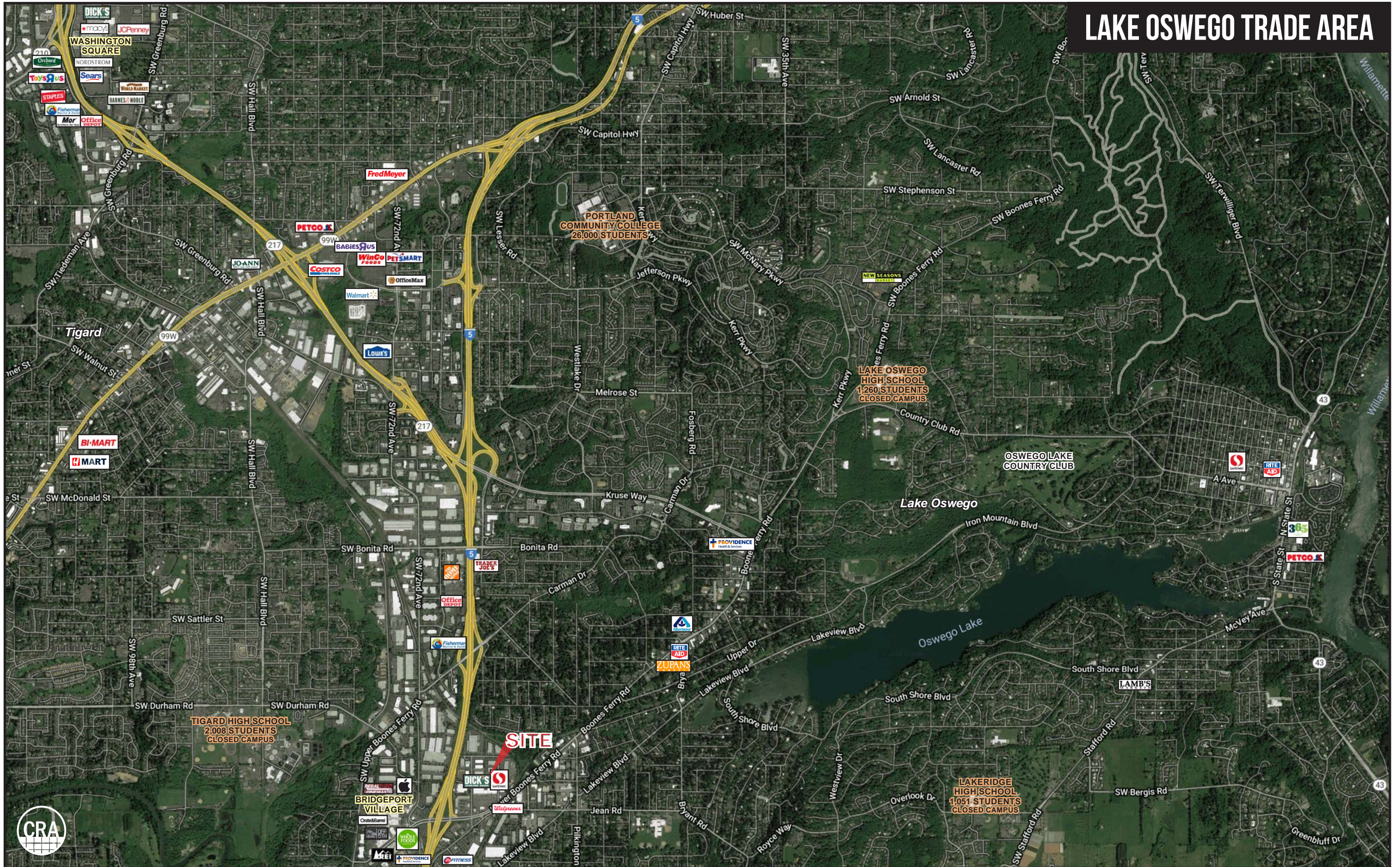
Source: Regis - SitesUSA (2015)



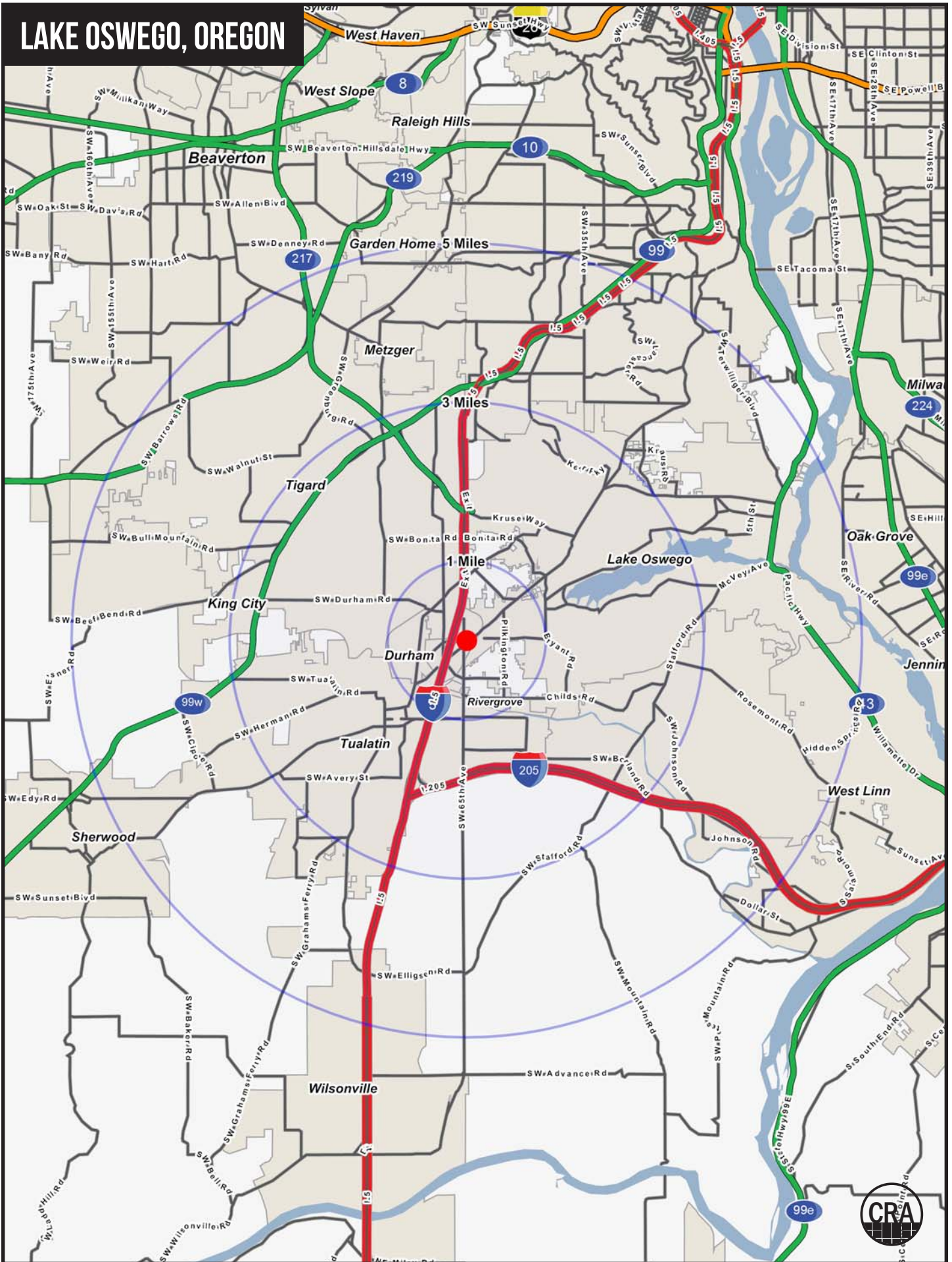
ALEX MACLEAN alex@cra-nw.com
JEFF OLSON jeff@cra-nw.com
503.274.0211

Commercial Realty Advisors NW, LLC
733 SW Second Avenue, Suite 200
Portland, Oregon 97204
www.cra-nw.com
Licensed brokers in Oregon & Washington

LAKE OSWEGO TRADE AREA



LAKE OSWEGO, OREGON



FULL PROFILE

2000-2010 Census, 2015 Estimates with 2020 Projections

Calculated using Weighted Block Centroid from Block Groups



Lat/Lon: 45.3967/-122.7434

RF1

17799 Lower Boones Ferry Rd		1 Mile	3 Miles	5 Miles
Lake Oswego, OR				
POPULATION	2015 Estimated Population	8,445	84,707	202,326
	2020 Projected Population	8,883	88,941	212,852
	2010 Census Population	8,084	80,981	194,251
	2000 Census Population	9,045	77,501	175,116
	Projected Annual Growth 2015 to 2020	1.0%	1.0%	1.0%
	Historical Annual Growth 2000 to 2015	-0.4%	0.6%	1.0%
HOUSEHOLDS	2015 Estimated Households	3,559	35,687	83,297
	2020 Projected Households	3,763	37,609	87,849
	2010 Census Households	3,375	33,877	79,490
	2000 Census Households	3,579	31,623	70,838
	Projected Annual Growth 2015 to 2020	1.1%	1.1%	1.1%
	Historical Annual Growth 2000 to 2015	-	0.9%	1.2%
AGE	2015 Est. Population Under 10 Years	11.4%	11.0%	11.3%
	2015 Est. Population 10 to 19 Years	12.2%	12.6%	12.3%
	2015 Est. Population 20 to 29 Years	11.5%	11.8%	11.5%
	2015 Est. Population 30 to 44 Years	19.3%	19.1%	20.2%
	2015 Est. Population 45 to 59 Years	23.3%	22.4%	22.5%
	2015 Est. Population 60 to 74 Years	17.1%	16.1%	15.9%
	2015 Est. Population 75 Years or Over	5.1%	7.0%	6.3%
	2015 Est. Median Age	41.3	41.4	40.8
MARITAL STATUS & GENDER	2015 Est. Male Population	48.3%	48.3%	48.2%
	2015 Est. Female Population	51.7%	51.7%	51.8%
	2015 Est. Never Married	31.6%	28.2%	27.8%
	2015 Est. Now Married	47.9%	50.2%	50.8%
	2015 Est. Separated or Divorced	17.2%	16.6%	16.7%
	2015 Est. Widowed	3.3%	5.0%	4.7%
INCOME	2015 Est. HH Income \$200,000 or More	6.4%	7.5%	8.3%
	2015 Est. HH Income \$150,000 to \$199,999	7.7%	7.2%	7.7%
	2015 Est. HH Income \$100,000 to \$149,999	12.4%	14.5%	16.1%
	2015 Est. HH Income \$75,000 to \$99,999	11.3%	13.2%	13.4%
	2015 Est. HH Income \$50,000 to \$74,999	20.3%	17.2%	16.6%
	2015 Est. HH Income \$35,000 to \$49,999	12.5%	12.9%	12.2%
	2015 Est. HH Income \$25,000 to \$34,999	11.7%	10.3%	8.9%
	2015 Est. HH Income \$15,000 to \$24,999	8.6%	9.0%	8.1%
	2015 Est. HH Income Under \$15,000	9.0%	8.3%	8.5%
	2015 Est. Average Household Income	\$84,163	\$90,434	\$95,733
	2015 Est. Median Household Income	\$66,569	\$69,804	\$73,086
	2015 Est. Per Capita Income	\$35,526	\$38,148	\$39,615
2015 Est. Total Businesses	1,069	6,116	10,610	
2015 Est. Total Employees	12,157	70,787	109,924	

This report was produced using data from private and government sources deemed to be reliable. The information herein is provided without representation or warranty.

FULL PROFILE

2000-2010 Census, 2015 Estimates with 2020 Projections

Calculated using Weighted Block Centroid from Block Groups



Lat/Lon: 45.3967/-122.7434

RF1

17799 Lower Boones Ferry Rd		1 Mile	3 Miles	5 Miles
Lake Oswego, OR				
RACE	2015 Est. White	86.0%	82.9%	83.1%
	2015 Est. Black	1.2%	1.4%	1.8%
	2015 Est. Asian or Pacific Islander	4.6%	6.0%	6.5%
	2015 Est. American Indian or Alaska Native	0.6%	0.5%	0.5%
	2015 Est. Other Races	7.6%	9.2%	8.0%
HISPANIC	2015 Est. Hispanic Population	787	9,974	19,457
	2015 Est. Hispanic Population	9.3%	11.8%	9.6%
	2020 Proj. Hispanic Population	10.6%	12.9%	10.6%
	2010 Hispanic Population	8.6%	11.3%	9.2%
EDUCATION (Adults 25 or Older)	2015 Est. Adult Population (25 Years or Over)	7,261	72,930	175,822
	2015 Est. Elementary (Grade Level 0 to 8)	2.7%	4.1%	3.6%
	2015 Est. Some High School (Grade Level 9 to 11)	5.5%	5.2%	4.7%
	2015 Est. High School Graduate	13.8%	14.0%	13.0%
	2015 Est. Some College	19.7%	18.5%	18.1%
	2015 Est. Associate Degree Only	6.3%	6.4%	6.6%
	2015 Est. Bachelor Degree Only	24.1%	25.0%	25.2%
	2015 Est. Graduate Degree	27.8%	26.7%	28.9%
HOUSING	2015 Est. Total Housing Units	3,657	36,694	85,867
	2015 Est. Owner-Occupied	58.2%	59.0%	62.1%
	2015 Est. Renter-Occupied	39.1%	38.2%	34.9%
	2015 Est. Vacant Housing	2.7%	2.7%	3.0%
HOMES BUILT BY YEAR	2010 Homes Built 2005 or later	5.8%	5.7%	6.4%
	2010 Homes Built 2000 to 2004	6.3%	6.7%	7.8%
	2010 Homes Built 1990 to 1999	18.6%	19.1%	19.7%
	2010 Homes Built 1980 to 1989	12.1%	19.8%	17.1%
	2010 Homes Built 1970 to 1979	25.7%	23.7%	22.2%
	2010 Homes Built 1960 to 1969	16.7%	10.8%	10.4%
	2010 Homes Built 1950 to 1959	5.3%	5.4%	6.5%
	2010 Homes Built Before 1949	9.6%	8.8%	10.0%
HOME VALUES	2010 Home Value \$1,000,000 or More	1.7%	2.9%	2.9%
	2010 Home Value \$500,000 to \$999,999	16.2%	17.9%	17.4%
	2010 Home Value \$400,000 to \$499,999	15.7%	12.0%	13.1%
	2010 Home Value \$300,000 to \$399,999	30.4%	23.1%	23.8%
	2010 Home Value \$200,000 to \$299,999	20.6%	24.6%	25.2%
	2010 Home Value \$150,000 to \$199,999	6.9%	8.6%	8.5%
	2010 Home Value \$100,000 to \$149,999	3.2%	4.6%	4.0%
	2010 Home Value \$50,000 to \$99,999	1.5%	2.2%	1.7%
	2010 Home Value \$25,000 to \$49,999	1.8%	1.5%	1.2%
	2010 Home Value Under \$25,000	1.9%	2.7%	2.2%
	2010 Median Home Value	\$346,736	\$349,500	\$351,530
	2010 Median Rent	\$858	\$828	\$829

This report was produced using data from private and government sources deemed to be reliable. The information herein is provided without representation or warranty.

FULL PROFILE

2000-2010 Census, 2015 Estimates with 2020 Projections

Calculated using Weighted Block Centroid from Block Groups



Lat/Lon: 45.3967/-122.7434

RF1

17799 Lower Boones Ferry Rd

Lake Oswego, OR

		1 Mile	3 Miles	5 Miles
LABOR FORCE	2015 Est. Labor Population Age 16 Years or Over	6,842	68,795	164,060
	2015 Est. Civilian Employed	62.3%	62.5%	63.2%
	2015 Est. Civilian Unemployed	5.6%	3.9%	3.5%
	2015 Est. in Armed Forces	-	-	0.1%
	2015 Est. not in Labor Force	32.1%	33.5%	33.2%
	2015 Labor Force Males	47.4%	47.6%	47.5%
	2015 Labor Force Females	52.6%	52.4%	52.5%
OCCUPATION	2010 Occupation: Population Age 16 Years or Over	3,970	38,875	93,936
	2010 Mgmt, Business, & Financial Operations	21.0%	20.4%	21.7%
	2010 Professional, Related	22.0%	24.6%	25.7%
	2010 Service	18.9%	16.0%	14.7%
	2010 Sales, Office	26.5%	26.7%	25.7%
	2010 Farming, Fishing, Forestry	1.3%	0.7%	0.5%
	2010 Construction, Extraction, Maintenance	2.6%	4.5%	4.6%
	2010 Production, Transport, Material Moving	7.6%	7.2%	7.1%
	2010 White Collar Workers	69.6%	71.6%	73.1%
	2010 Blue Collar Workers	30.4%	28.4%	26.9%
TRANSPORTATION TO WORK	2010 Drive to Work Alone	71.0%	76.5%	75.5%
	2010 Drive to Work in Carpool	8.2%	7.4%	8.0%
	2010 Travel to Work by Public Transportation	2.9%	3.6%	3.9%
	2010 Drive to Work on Motorcycle	0.1%	0.4%	0.3%
	2010 Walk or Bicycle to Work	4.9%	3.2%	3.6%
	2010 Other Means	0.2%	0.4%	0.5%
	2010 Work at Home	12.8%	8.5%	8.2%
TRAVEL TIME	2010 Travel to Work in 14 Minutes or Less	38.8%	32.2%	27.9%
	2010 Travel to Work in 15 to 29 Minutes	38.3%	39.4%	42.8%
	2010 Travel to Work in 30 to 59 Minutes	20.9%	25.1%	26.1%
	2010 Travel to Work in 60 Minutes or More	2.0%	3.3%	3.2%
	2010 Average Travel Time to Work	18.5	19.7	20.6
CONSUMER EXPENDITURE	2015 Est. Total Household Expenditure	\$222 M	\$2.33 B	\$5.67 B
	2015 Est. Apparel	\$7.77 M	\$81.5 M	\$199 M
	2015 Est. Contributions, Gifts	\$15.7 M	\$168 M	\$414 M
	2015 Est. Education, Reading	\$8.92 M	\$95.5 M	\$236 M
	2015 Est. Entertainment	\$12.5 M	\$131 M	\$320 M
	2015 Est. Food, Beverages, Tobacco	\$33.6 M	\$351 M	\$850 M
	2015 Est. Furnishings, Equipment	\$7.67 M	\$81.3 M	\$199 M
	2015 Est. Health Care, Insurance	\$19.2 M	\$201 M	\$487 M
	2015 Est. Household Operations, Shelter, Utilities	\$68.6 M	\$721 M	\$1.75 B
	2015 Est. Miscellaneous Expenses	\$3.23 M	\$34.0 M	\$82.3 M
	2015 Est. Personal Care	\$2.87 M	\$30.1 M	\$73.3 M
2015 Est. Transportation	\$41.6 M	\$435 M	\$1.06 B	

This report was produced using data from private and government sources deemed to be reliable. The information herein is provided without representation or warranty.